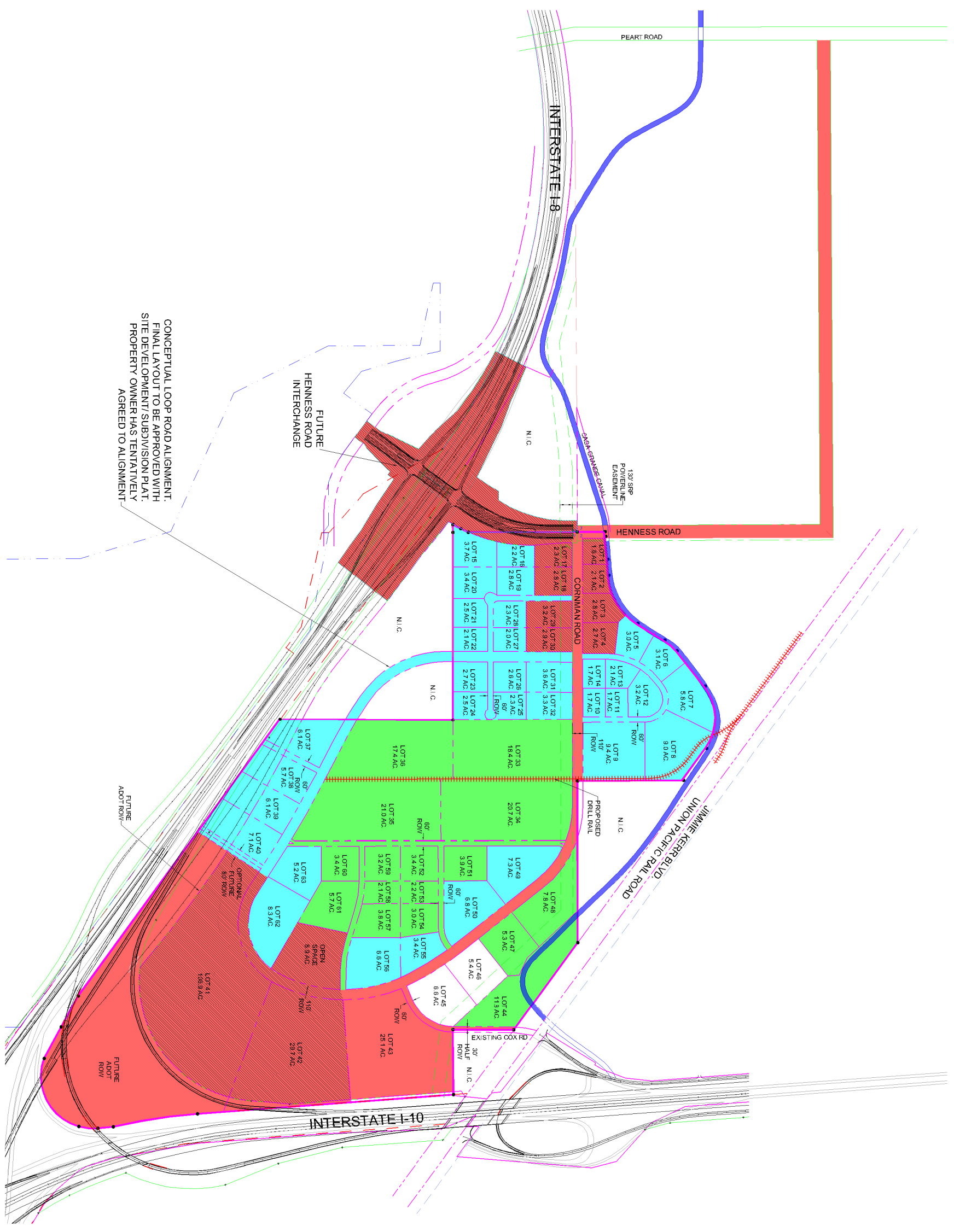


- PHASING**
- PHASE 1A
  - PHASE 1B
  - PHASE 2
  - PHASE 3



CONCEPTUAL LOOP ROAD ALIGNMENT  
FINAL LAYOUT TO BE APPROVED WITH  
SITE DEVELOPMENT/SUBDIVISION PLAN.  
PROPERTY OWNER HAS TENTATIVELY  
AGREED TO ALIGNMENT

# REGIONAL GATEWAY COMMERCE CENTER

CASA GRANDE, AZ

## PHASING PLAN

PREPARED FOR: CASA GRANDE MOUNTAIN RANCH LIMITED PARTNERSHIP, GEORGE CHASSE - GENERAL PARTNER

DATE: 9-10-13

SCALE: 1" = 500'

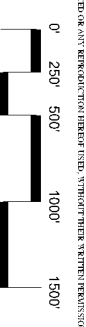


EXHIBIT 5



GILMORE PARSONS

LAND DESIGN GROUP  
2311 N. 7th Street, Phoenix, AZ 85006  
T 602.266.5622 F 602.266.5707  
www.gilmore.com