

Legend

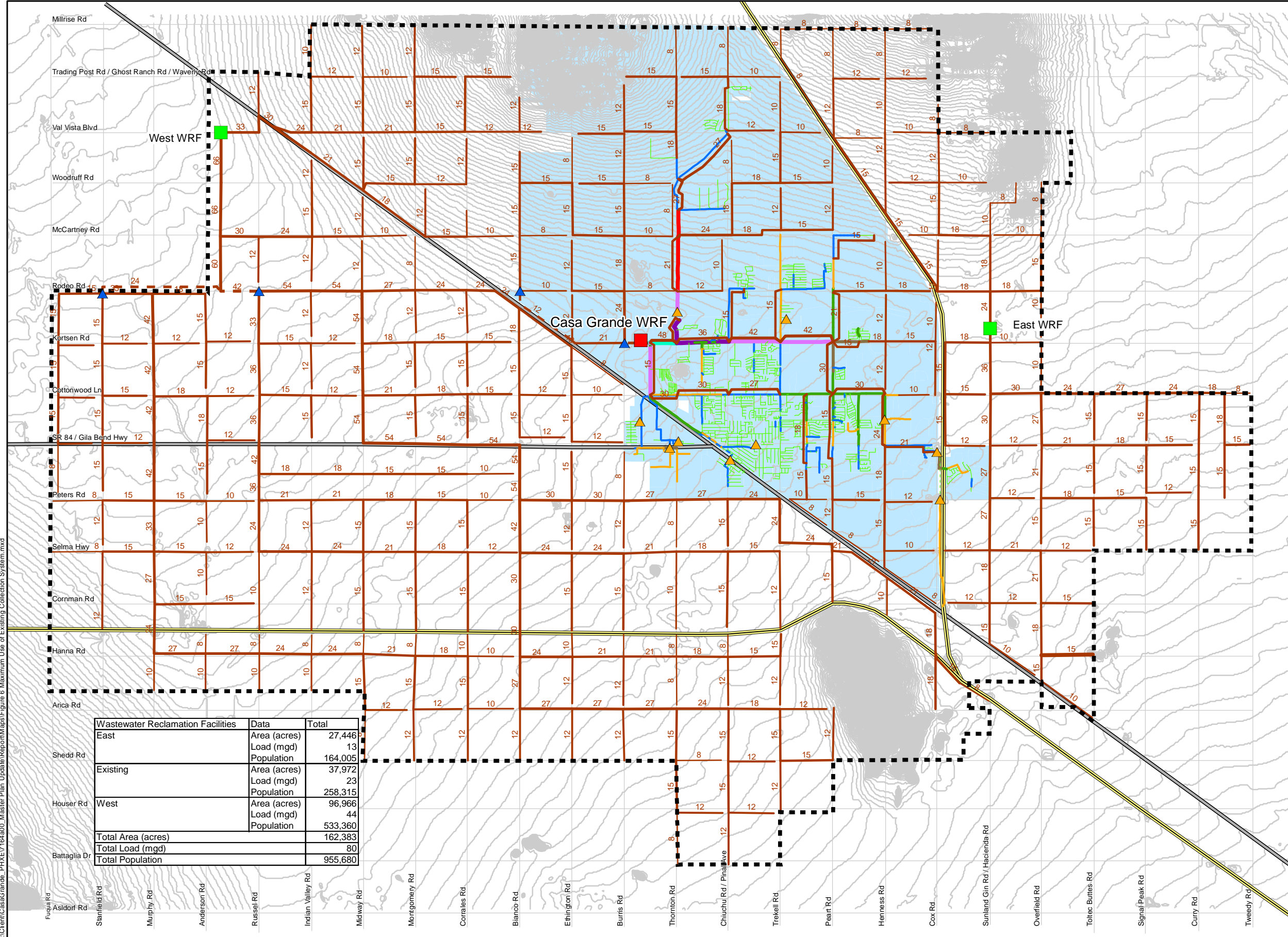
- Future Lift Station
 - Future Water Reclamation Facility
 - Existing Lift Station
 - Existing Water Reclamation Facility
- Future Pipes**
- Diameter**
- Gravity Main, Diameter as Annotated
 - Force Main
- Existing Pipes**
- Diameter, Type**
- Smaller than 12" - Force Main
 - Smaller than 12"
 - 12"
 - 12" - Force Main
 - 15"
 - 18"
 - 21"
 - 27"
 - 30"
 - 36"
 - 42"
- Planning Boundary
 - Existing Water Reclamation Facility Service Area
 - Interstate
 - State Highway
 - Contours (5ft Interval)

Notes:

(1) The data represented in this map is based on information obtained from the City of Casa Grande.

(2) This GIS map is a limited representation of facilities, intended for planning purposes only. It is not intended for construction or other purposes requiring greater positional accuracy.

(3) Wastewater flows are based on 70 gpc/day for residential areas and 1000 g/ac/day for non-residential areas



Wastewater Reclamation Facilities		Data	Total
East	Area (acres)		27,446
	Load (mgd)		13
	Population		164,005
Existing	Area (acres)		37,972
	Load (mgd)		23
	Population		258,315
West	Area (acres)		96,966
	Load (mgd)		44
	Population		533,360
Total Area (acres)			162,383
Total Load (mgd)			80
Total Population			955,680

Option 1: Proposed Wastewater Facilities at Buildout, Maximize Use of the Existing Wastewater Reclamation Facility

Figure 6

M:\Client\CasaGrande_PHX\7164300_Master Plan Update\Report\Maps\Figure 6 Maximum Use of Existing Collection System.mxd