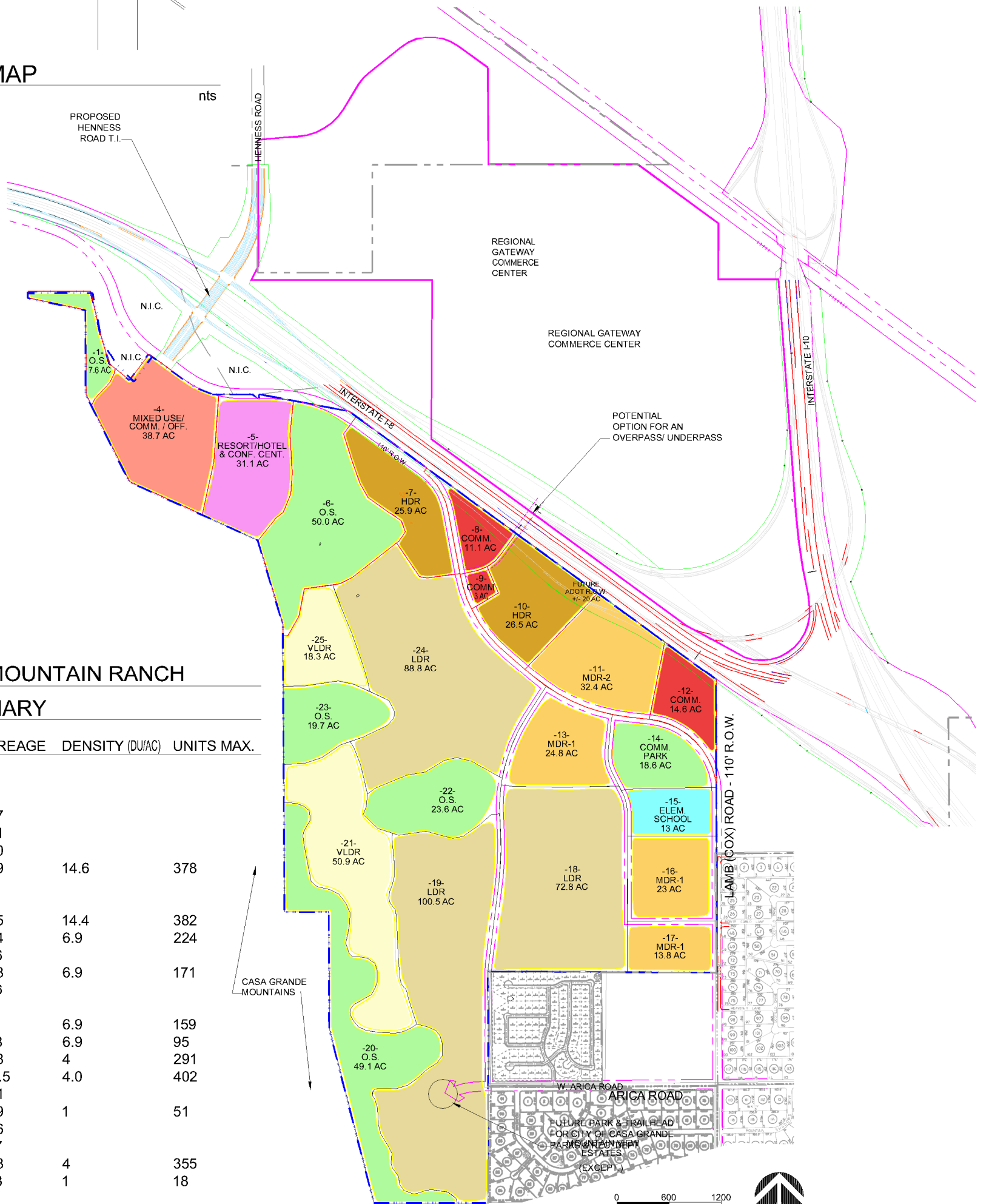


VICINITY MAP

- LEGEND**
- VERY LOW DENSITY RESIDENTIAL
 - LOW DENSITY RESIDENTIAL
 - MEDIUM DENSITY RESIDENTIAL
 - HIGH DENSITY RESIDENTIAL
 - ELEMENTARY SCHOOL
 - COMMERCIAL / MIXED USE / OFFICE
 - RESORT
 - OPEN SPACE / COMMUNITY PARK
 - COMMERCIAL



**CASA GRANDE MOUNTAIN RANCH
LAND USE SUMMARY**

| LOT | LAND USE | ACREAGE | DENSITY (DU/AC) | UNITS MAX. |
|--------------------|-----------|--------------|-----------------------|-------------|
| 1 | O.S. | 7.6 | | |
| 2 | N.I.C. | | | |
| 3 | N.I.C. | | | |
| 4 | MU/ COMM | 38.7 | | |
| 5 | RESORT | 31.1 | | |
| 6 | O.S. | 50.0 | | |
| 7 | HDR | 25.9 | 14.6 | 378 |
| 8 | COMM | 11.1 | | |
| 9 | COMM | 3.0 | | |
| 10 | HDR | 26.5 | 14.4 | 382 |
| 11 | MDR-2 | 32.4 | 6.9 | 224 |
| 12 | COMM | 14.6 | | |
| 13 | MDR-1 | 24.8 | 6.9 | 171 |
| 14 | COMM PARK | 18.6 | | |
| 15 | SCHOOL | 13 | | |
| 16 | MDR-1 | 23 | 6.9 | 159 |
| 17 | MDR-1 | 13.8 | 6.9 | 95 |
| 18 | LDR | 72.8 | 4 | 291 |
| 19 | LDR | 100.5 | 4.0 | 402 |
| 20 | O.S. | 49.1 | | |
| 21 | VLDR | 50.9 | 1 | 51 |
| 22 | O.S. | 23.6 | | |
| 23 | O.S. | 19.7 | | |
| 24 | LDR | 88.8 | 4 | 355 |
| 25 | VLDR | 18.3 | 1 | 18 |
| TOTAL | | 757.8 | | 2526 |
| COMM | | 98.5 | | |
| GR.RES.DEV. | | 659.3 | | |
| O.S. | | 168.6 | (168.6/ 659.3) | 26% |

DENSITY

DEVELOPABLE SITE AREA: 757.8 AC
 NET SCHOOL AREA: 12.0 AC
 NET COMMERCIAL: 93.8 AC
 ARTERIAL ROW: 20.1 AC
 NET RESIDENTIAL AREA: 631.9 AC
 DENSITY = 2526 (# OF LOTS) / 631.9 (NET RESIDENTIAL AREA) = 4.0 DU/AC

SCALE: 1" = 600'-0"



EXHIBIT H
UPDATED 12-18-13

**CASA GRANDE
MOUNTAIN RANCH** CASA GRANDE, AZ

MASTER
LAND USE PLAN

PREPARED FOR: CASA GRANDE MOUNTAIN RANCH LIMITED PARTNERSHIP, GEORGE CHASSE - GENERAL PARTNER
 DATE: 2-14-07 MINOR GENERAL PLAN AMENDMENT APPROVED 2-18-14



THIS DRAWING IS AN INSTRUMENT OF SERVICE AND THE PROPERTY OF GILMORE PLANNING & LANDSCAPE ARCHITECTURE. THIS DRAWING MAY NOT BE REPRODUCED OR ANY REPRODUCTION THEREOF USED WITHOUT THE WRITTEN PERMISSION. © COPYRIGHT 2013 GPLA JOB# 11027