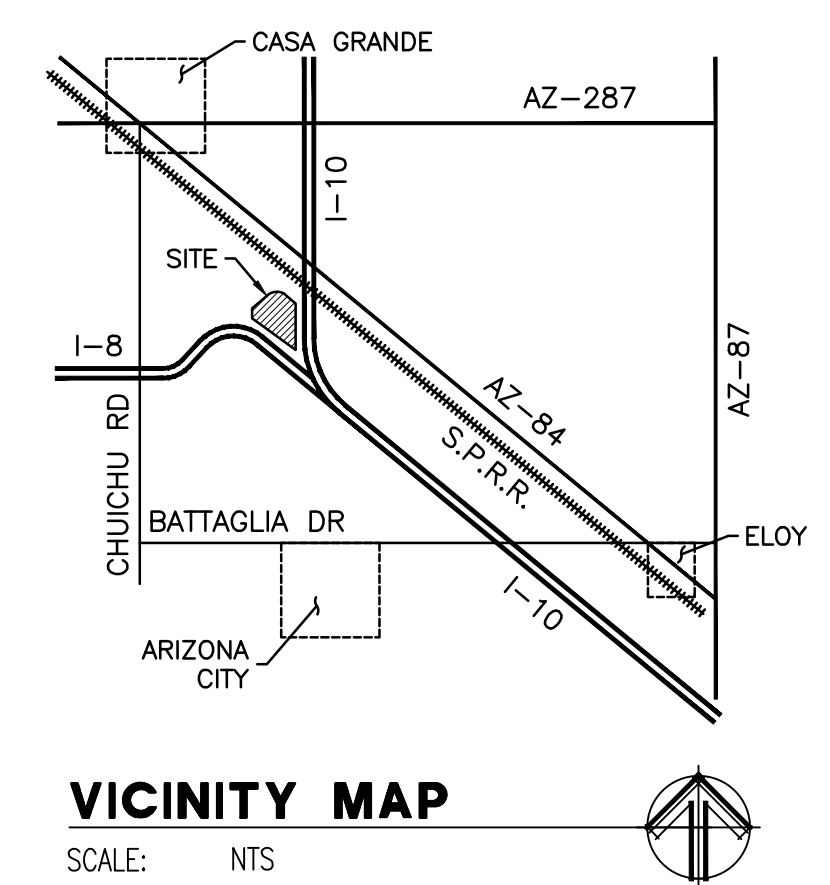


**CONCEPTUAL UTILITIES
FOR
REGIONAL GATEWAY COMMERCE CENTER
I-10 & I-8 INTERCHANGE
CASA GRANDE, AZ**



DEVELOPER
CHASSE R.E. & FINANCIAL GROUP
P.O. BOX 15267
PHOENIX, AZ 85060
CONTACT: GEORGE CHASSE, SR.

ENGINEER
CEG, INC.
P.O. BOX 2368
GLENDALE, AZ 85311
623.536.1993
CONTACT: NATE COTTRELL

LEGEND:

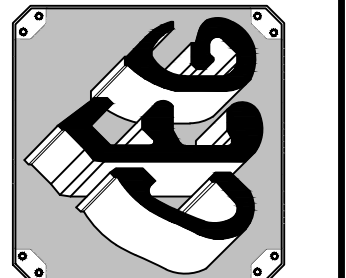
- LIMITS OF CURRENT DEVELOPMENT
- EXISTING WATER LINE
- EXISTING SEWER LINE
- NEW 12" DIP WATER LINE
- FUTURE 12" WATER LINE CONNECTION
- NEW 15" PVC SEWER LINE
- NEW 8" PVC SEWER LINE

**REGIONAL GATEWAY COMMERCE CENTER
CONCEPTUAL UTILITIES**

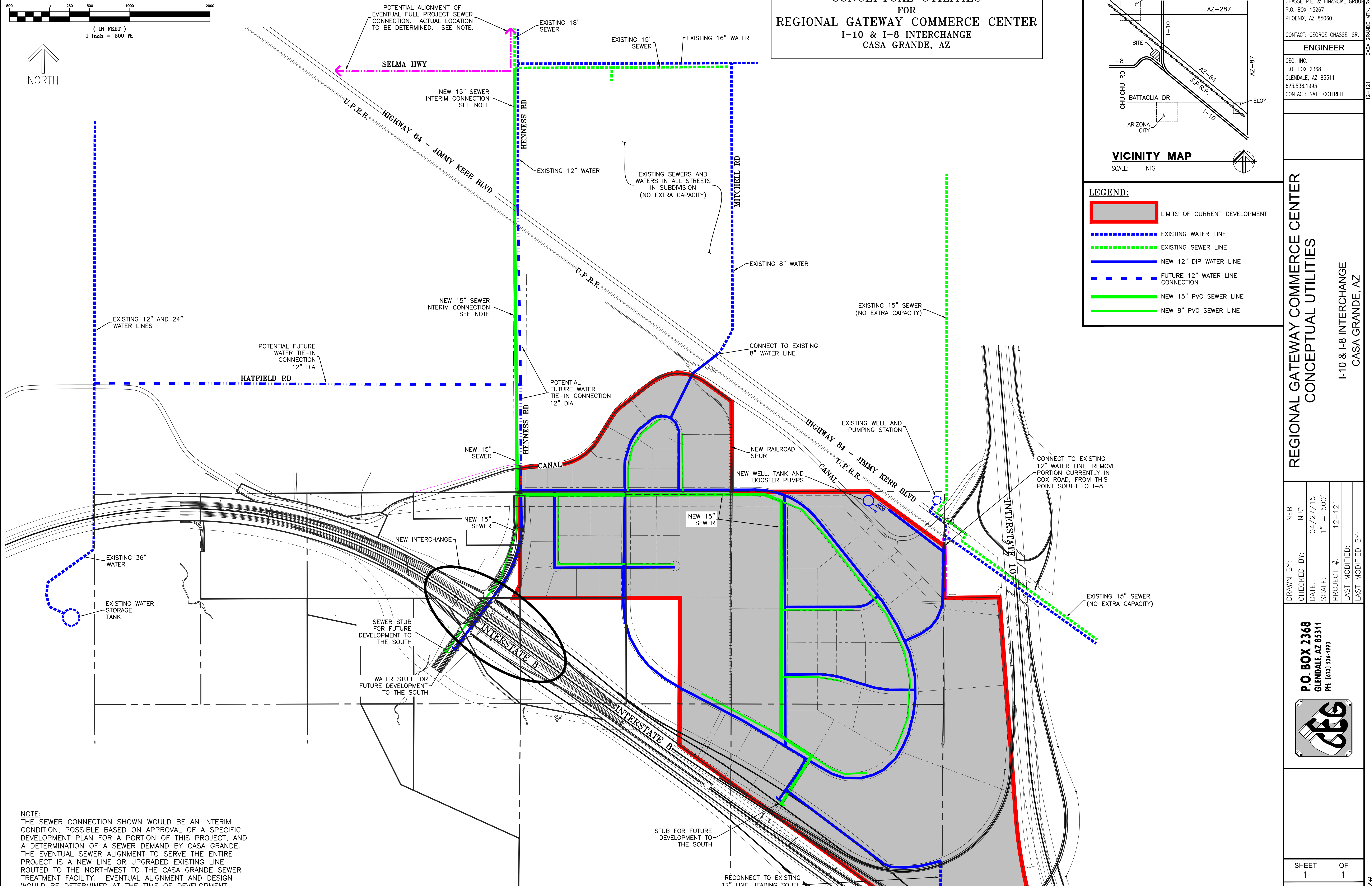
I-10 & I-8 INTERCHANGE
CASA GRANDE, AZ

DRAWN BY: NEB
CHECKED BY: NJC
DATE: 04/27/15
SCALE: 1" = 500'
PROJECT #: 12-121
LAST MODIFIED: _____
LAST MODIFIED BY: _____

**P.O. BOX 2368
GLENDALE, AZ 85311
PH: (623) 536-1993**



SHEET 1 OF 1
U-1.01



NOTE:
THE SEWER CONNECTION SHOWN WOULD BE AN INTERIM CONDITION, POSSIBLE BASED ON APPROVAL OF A SPECIFIC DEVELOPMENT PLAN FOR A PORTION OF THIS PROJECT, AND A DETERMINATION OF A SEWER DEMAND BY CASA GRANDE. THE EVENTUAL SEWER ALIGNMENT TO SERVE THE ENTIRE PROJECT IS A NEW LINE OR UPGRADED EXISTING LINE ROUTED TO THE NORTHWEST TO THE CASA GRANDE SEWER TREATMENT FACILITY. EVENTUAL ALIGNMENT AND DESIGN WOULD BE DETERMINED AT THE TIME OF DEVELOPMENT.

CASA GRANDE MTN. RANCH
12-121
CITY#